

ScanAssetTM

Asset Management System

MobilityScan Solutions builds and packages solutions for business. Whether it is within the four walls of the manufacturing plant and warehouse or with a mobile service force, MobilityScan provides Solutions.

A MobilityScan Solution presented by:



Key Features:

Top down view of Assets in organization

- Unlimited location levels
- Split view of locations and assets

Notifications

- Notifies pending or overdue calibrations, maintenance, checked out items
- email notification of past due item

Physical Inventory

- Works with Pocket PC 2002 or higher PDA's and Terminals
 - Supports handheld scanner
- In field reconciliation - easily see found and missing items, provide current status of asset.

Check Out

- Built in support for checking out assets and tracking due dates
- Works easily with scanner to quickly build a check out / in list.

Database

- Uses Microsoft MSDE or Microsoft SQL database
 - Works from single user systems, multi-user network and corporate level installations
- Built using .Net Framework

Import / Export

- Easily import data from existing accounting information to speed physical inventories.
- Export reconciled data out to a format for easy import into a corporate accounting package.

History

- Complete history of transactions. Keep track of field changes, moves, check outs, etc.
- Incorporates tracking information into Asset Details

ScanAsset is a complete asset management system utilizing portable data collection to track inventory management, check in/out and depreciation.

With **ScanAsset's** ease-of-use, you can conduct physical inventories with the terminal or from the desktop. The functionality of **ScanAsset** allows you to keep concise records of where your assets are located, current value, and even embed pictures in your database.

ScanAsset excels where all other packages fall behind!!



ScanAsset is a complete asset management system utilizing

- portable data collection
- handheld keyboard wedge or USB interface scanners
- Barcode printers and labels

ScanAsset Standard Software Package

- Uses MDSE Database Engine
 - Supports 1 - 5 User(s)
 - Includes 1 CE Client license for Mobile Computer
- Item No.: SA_Standard

ScanAsset Enterprise Software Package

- Uses MS SQL Database Engine (not included)
 - Supports Unlimited Users
 - Includes 1 CE Client license for Mobile Computer
- Item No.: SA_Enterprise

New in Version 2 ...

Built using .Net framework
Supports XP Themes

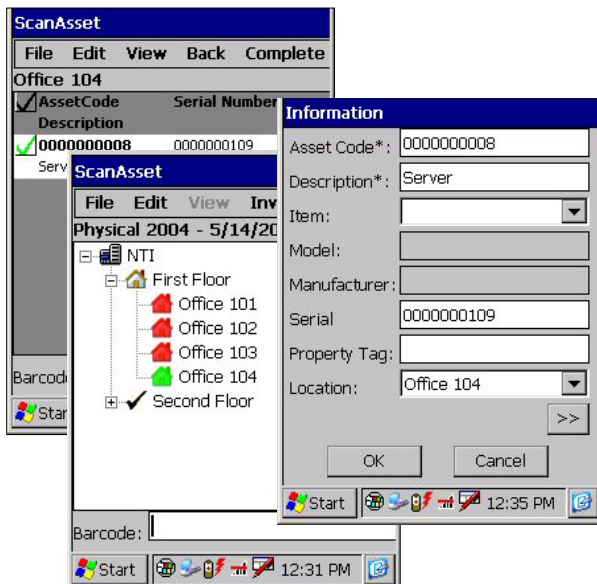
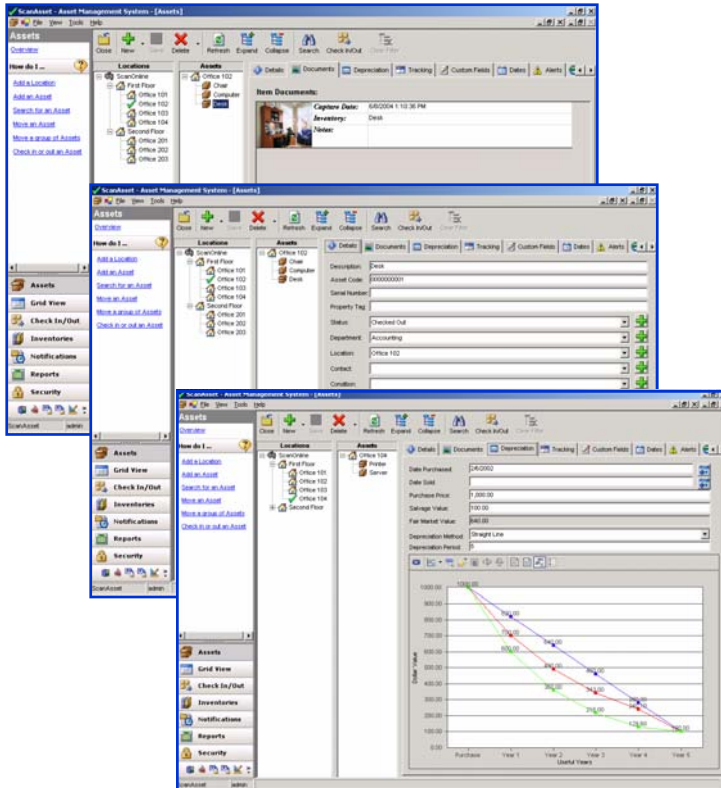
- **Ability to embed documents & Images**
- **Incorporates tracking information into Asset details**
- **Split view of Locations/Assets**

ScanAssetTM

Asset Management System

MobilityScan Solutions builds and packages solutions for business. Whether it is within the four walls of the manufacturing plant and warehouse or with a mobile service force, MobilityScan provides Solutions.

A MobilityScan Solution presented by:



Asset Information

- Top down view of assets
- Assets can belong to parent assets
- Unlimited location levels
- Easy-to-use interface
- Embed Documents or Images
- Event and History Tracking

Track your Assets - Save Money

Our Asset Management allows you to maintain accurate physical inventories to track mobile assets by constantly monitoring who they are assigned to, where they are, and when they're due to return.

ScanAsset incorporates detailed reports of all your valuable assets which will reduce your asset replacement costs.

Comprehensive reports include:

- Asset details, summary, history, location.
- View assets needing attention or due for maintenance/calibration.
- Check-in/check-out reports are also available.

ScanAsset's Handheld Inventory

Shows a tree view of assets and allows you to reconcile assets per location on the spot!!!

You can determine what assets are missing or lost instantly

System Requirements

- Windows NT SP6, 2000, XP Pro, XP Home
- 133 MHz or Higher Pentium-compatible Processor
- 64 MB Ram, 650 MB Free Hard Disk Space
- CD Rom Drive, Keyboard
- VGA or higher resolution monitor