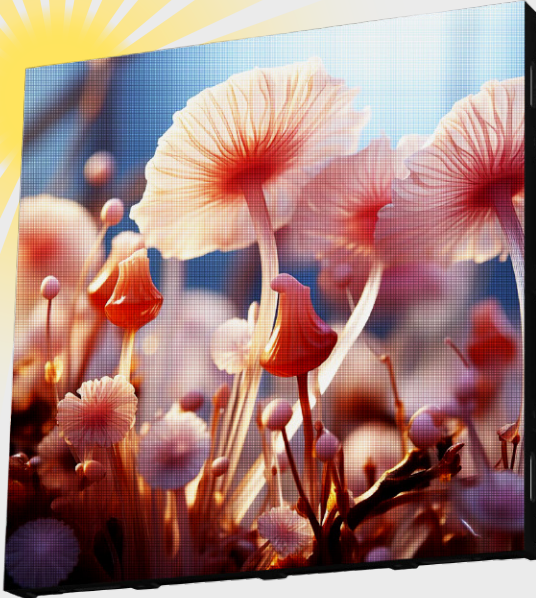


[BACK TO PRODUCT CATEGORY](#)

INDOOR HIGH BRIGHTNESS

LED VIDEO WALL SOLUTION



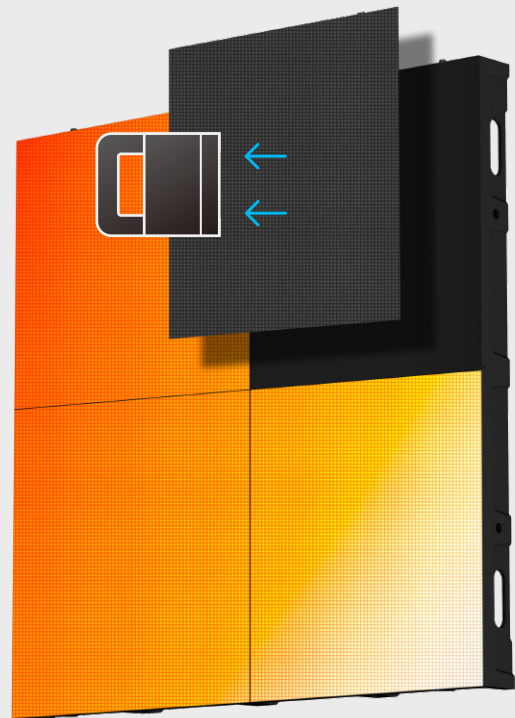


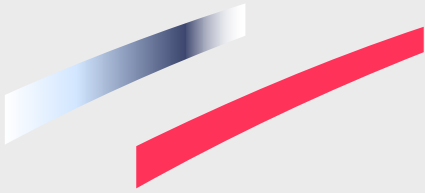
FINE PITCH HIGH BRIGHTNESS

High brightness ratings deliver superior visibility in bright, outdoor environments, making them ideal for window-facing applications. Additionally, the fine pitch of the displays delivers crisp, detailed images even when viewed up close.

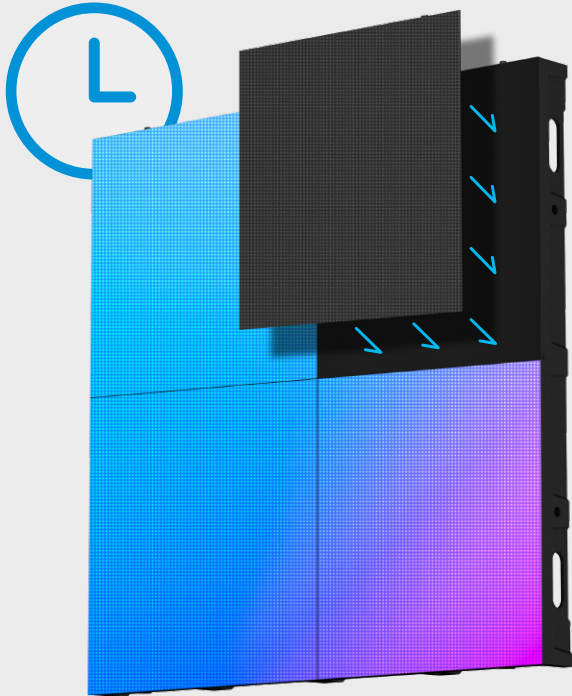
FRONT MAINTENANCE

Maintenance is made easier with a front-access magnetic attachment system, significantly reducing the time required for dismantling.





KEY FEATURES

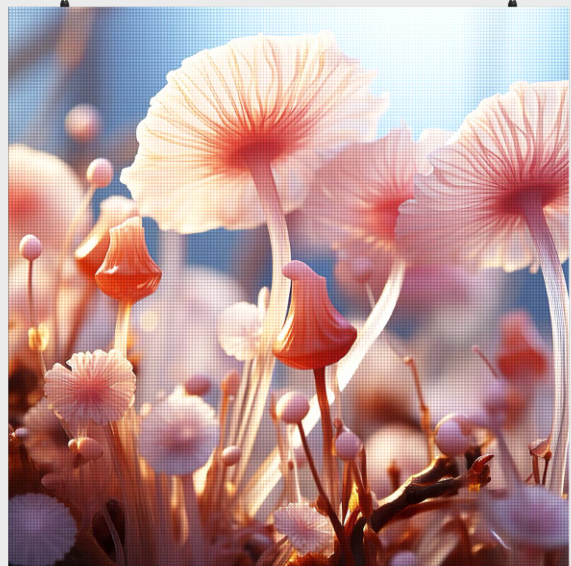


QUICK ASSEMBLY

Equipped with a hard plug connection system, they ensure a secure and stable setup, further simplifying the installation process. This not only speeds up installation but also reduces structural requirements, making them an ideal choice for storefront windows where space is at a premium.

LIGHTWEIGHT

DynaScan LED displays feature a lightweight yet durable aluminum structure, weighing just one-third as much as steel.



6.3 kg

Weight (kg/cabinet)

25.2 kg

Weight (kg/m²)

INDUSTRY TREND

Retailers are embracing fine-pitch LED displays for store window signage due to their exceptional brightness, high resolution, and customizable sizes, which create eye-catching installations.

These displays are energy-efficient, durable, and slim, making them easy to integrate without blocking views inside the store. With dynamic content capabilities, retailers can quickly update promotions and campaigns, enhancing engagement while reducing operational costs.



**SUNPEAK
SPORTS**

P1.8 HIGH BRIGHTNESS LED

Model	LN018AQ4
LED Type	SMD 1415
Pitch	1.86 mm
Module Resolution (H x W)	134 x 134 dots
Scan	1/34 Scan
Refresh Rate	≥ 3840
Driver IC	Hi-refresh IC
Grayscale	12 ~ 16 bit
Brightness	3500 Nits
Power Consumption	Max: 567 W/m ² Average: 189 W/m ²
Dimensions	250mm x 250mm
Cabinet Dimensions	500 x 500 x 41mm
Cabinet Area (m²)	0.25
Weight	6.3 kg/Cabinet , 25.2 kg/m ²

P2.5 HIGH BRIGHTNESS LED

Model	LN025AQ4
LED Type	SMD 1415
Pitch	2.5mm
Module Resolution (H x W)	100 x 100 dots
Scan	1/25 Scan
Refresh Rate	≥ 3840
Driver IC	Hi-refresh IC
Grayscale	12 ~ 16 bit
Brightness	3500 Nits
Power Consumption	Max: 530 W/m ² Average: 176 W/m ²
Dimensions	250mm x 250mm
Cabinet Dimensions	500 x 500 x 41mm
Cabinet Area (m²)	0.25
Weight	6.3 kg/Cabinet , 25.2 kg/m ²

[BACK TO PRODUCT CATEGORY](#)